

## Specifications

Microscope Unit		SL-D301
Type	Galilean type	
Magnification	Drum, 3-step magnification	
Magnification steps	10/16/25	
Overall magnification	10.00 (φ 22.5mm) 15.98 (φ 14.1mm) 25.53 (φ 8.8mm)	
Eyepiece lens	Magnification: 12.5x Diopter adjustment range: -5D to +5D	
PD adjustment range	55 to 78mm	
Illumination Unit		
Illumination field	Slit width: 0 to 9mm, can be altered gradually (9mm=circle) Slit length: 1 to 8mm, can be altered gradually	
Aperture diameter	φ 9, 8, 5, 3, 2, 1, 0.2mm	
Slit direction	Vertical to horizontal, can be altered gradually	
Inclination	5°, 10°, 15°, 20° from below Available for use side swing	
Filter	Blue filter, red-free filter, ND filter (13% transmission), UV cut filter (normal use), IR cut filter (normal use)	
Illumination lamp	Halogen type: 6V 20W	
Base Unit		
Forward-backward movement length	90mm	
Right-left movement length	100mm	
Vertical movement length	30mm	
Fine adjustment in all directions length	12mm	
Chinrest Unit		
Adjustable range of the vertical direction	80mm	
Fixation target	Fixation target with diopter adjustment Light source for fixation target: LED	
Other Specification		
Dimensions	w/Table 550mm(W) x 430mm(D) x 760 to 790mm(H) w/ Unit Table 440mm(W) x 410mm(D) x 760 to 790mm(H) w/o Table 312mm(W) x 296mm(D) x 646 to 676mm(H)	
Weight	w/Table 17.5kg w/ Unit Table 17kg w/o Table 12kg	
Power Supply	100-240V AC 50-60Hz, 80VA	
DC-4 Digital Camera Unit (Option)		
System	Beam flux division by beam splitter	
Beam splitter division ratio	Operator side: 50%; Camera side: 50%	
Focus distance	35.7mm	
Sensor type	1/2.5 type CMOS; Effective pixel number: 5.04 M pixels	
Sensor Size (H x V pixels)	2590 x 1942	
Dimensions	76mm(W) x 163mm(D) x 304mm(H)	
Weight	430g	



\* Not available in all countries, please check with your distributor for availability in your country  
\* Subject to change in design and/or specifications without advanced notice.

**IMPORTANT** In order to obtain the best results with this instrument, please be sure to review all user instructions prior to operation.



TOPCON CORPORATION

TOPCON CORPORATION

TOPCON CORPORATION

**TOPCON CORPORATION**  
75-1 Hasunuma-cho, Itabashi-ku, Tokyo 174-8580, Japan. Phone:+81-(0)3-3558-2522/2502 Fax:+81-(0)3-3965-6898 www.topcon.co.jp

**TOPCON MEDICAL SYSTEMS, INC.**  
111 Bauer Drive, Oakland, NJ 07436, U.S.A.  
Phone:+1-201-599-5100 Fax:+1-201-599-5250 www.topconmedical.com

**TOPCON CANADA INC.**  
110 Provencher Avenue, Boisbriand, QC J7G 1N1 CANADA  
Phone:+1-450-430-7771 Fax:+1-450-430-6457 www.topcon.ca

**TOPCON EUROPE MEDICAL B.V.**  
Esebeaan 11, 2908 LJ Capelle a/d IJssel, P.O.Box145,  
2900 AC Capelle a/d IJssel, THE NETHERLANDS  
Phone:+31-(0)10-4585077 Fax:+31-(0)10-4585045  
E-mail: medical@topcon.eu; www.topcon-medical.eu

**ITALY OFFICE**  
Viale dell'Industria 60, 20037 Paderno Dugnano, (Milano), ITALY  
Phone:+39-02-9186671 Fax:+39-02-91081091 E-mail: info@topcon.it; www.topcon.it

**DANMARK OFFICE**  
Praestemarksvej 25, 4000 Roskilde, DANMARK  
Phone:+45-46-327500 Fax:+45-46-327555  
E-mail: topcon@topcon.danmark.dk www.topcon.danmark.dk

**IRELAND OFFICE**  
Unit 276, Blanchardstown, Corporate Park 2 Ballycoolin Dublin 15, IRELAND  
Phone:+353-18975900 Fax:+353-18293915 E-mail: medical@topcon.ie; www.topcon.ie

**TOPCON S.A.R.L.**  
BAT A1 3 route de la révolte 93206 SAINT DENIS CEDEX  
Phone:+33-1-49-21-23-23 Fax: +33-1-49-21-23-24 E-mail: topcon@topcon.fr; www.topcon.fr

**TOPCON DEUTSCHLAND MEDICAL G.m.b.H.**  
Hanns-Martin-Schleyer Strasse 41, D-47877 Willich, GERMANY  
Phone:+49-(0)2154-8850 Fax:+49-(0)2154-885177 E-mail: med@topcon.de; www.topcon.de

**TOPCON SCANDINAVIA A.B.**  
Neogatan 2, P.O.Box 25, 43151 Mölndal, SWEDEN  
Phone:+46-(0)31-7109200 Fax:+46-(0)31-7109249 E-mail: medical@topcon.se; www.topcon.se

**TOPCON ESPAÑA S.A.**  
HEAD OFFICE  
Frederic Mompou 4 Esc. A Bajos 3, 08960 Sant Just Desvern Barcelona, SPAIN  
Phone:+34-93-4734057 Fax:+34-93-4733932 E-mail: medica@topcon.es; www.topcon.es

**TOPCON ( GREAT BRITAIN ) LTD.**  
Topcon House, Kennet Side, Bone Lane, Newbury, Berkshire RG14 5PX United Kingdom  
Phone:+44-(0)1635-551120 Fax:+44-(0)1635-551170 E-mail: medical@topcon.co.uk; www.topcon.co.uk

**TOPCON POLSKA Sp. z o.o.**  
ul. Warszawska 23; 42-470 Siewierz, POLAND  
Phone:+48-(0)32-6705045 Fax:+48-(0)32-6713405 www.topcon-polska.pl

**TOPCON SINGAPORE MEDICAL PTE. LTD.**  
1 JALAN KILANG TIMOR #09-01 PACIFIC TECH CENTRE SINGAPORE 159303  
Phone:+65-68720606 Fax:+65-67739150  
E-mail: medical\_sales@topcon.com.sg www.topcon.com.sg

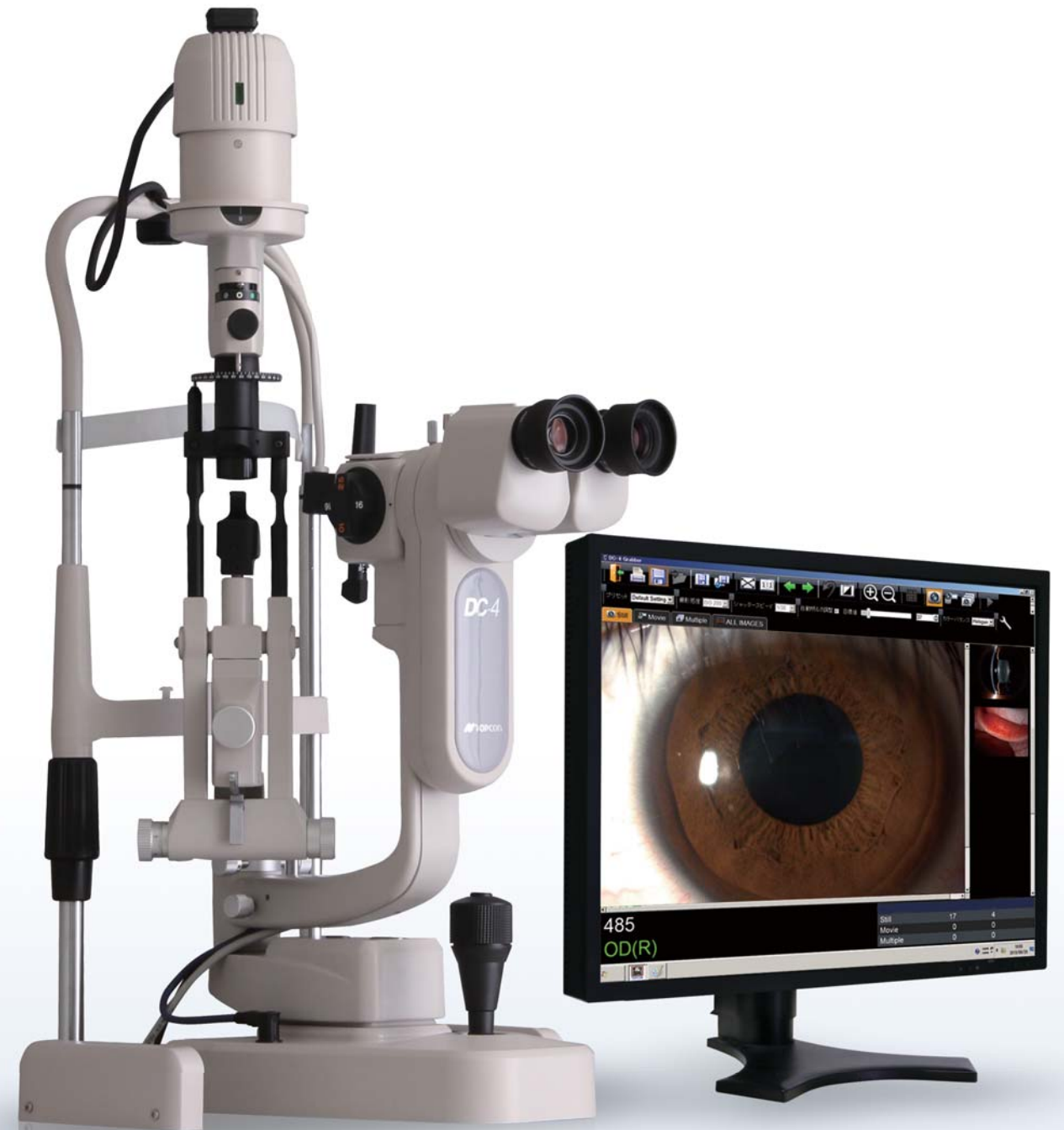
**REPRESENTATIVE OFFICE IN INDONESIA**  
Level 38, Tower A, Kota Kasablanka unit: GH-04, Jl. Casablanca, Kav. 88, Jakarta, Indonesia 12870  
Phone:+62-21-2963-8004

**TOPCON INSTRUMENTS ( MALAYSIA ) SDN.BHD.**  
No. D1, (Ground Floor), Jalan Excella 2, Off Jalan Ampang Putra,  
Taman Ampang Hilir, 55100 Kuala Lumpur, MALAYSIA  
Phone:+60-(0)3-42709866 Fax:+60-(0)3-42709766

**TOPCON INSTRUMENTS ( THAILAND ) CO.,LTD.**  
77/162 Sinnsathorn Tower, 37th Floor, Krungthornburi Rd, Klongtonn, Bangkok 10600, THAILAND  
Phone:+66(0)2-440-1152-7 Fax:+66-(0)2-440-1158

# SL-D301

## Slit Lamp



**TOPCON**



# High Performance, Affordably Priced



## SL-D301 Slit Lamp

### Features

- » A Classic Slit Lamp ideal for all basic clinical examinations
- » Smooth movements and time proven durability
- » Reliability and value assured by Topcon's 40+ years of experience
- » Optional integrated digital camera provides simple image and video acquisition

### DC-4 Digital Camera<sup>1</sup>

#### » Smart capture function

With the simple push of a button on the control lever, the operator can obtain a rapid series of images that are quickly saved for later revision and selection. The Smart Capture function minimizes failed images and blurry pictures, especially in patients with excessive blinking.

#### » Live view

When using the EZ Capture software in conjunction with the DC-4, a real-time live image will be seen on the monitor to facilitate alignment and focus. The live image can be used to show the eye condition to third party individuals for teaching and education. Sensitivity, shutter speed and white balance can be adjusted from the computer.

#### » High-resolution sensor

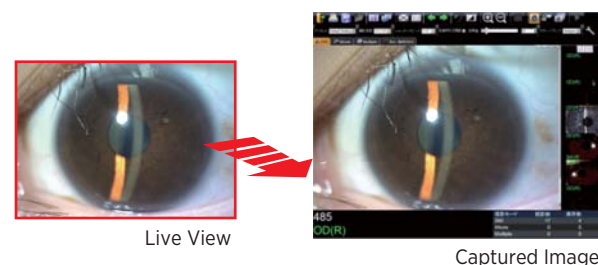
#### » Superior visibility

#### » Video capability

The DC-4 allows for easy acquisition of eye movement video clips without interfering with the examination.

#### » Still Image acquisition with auto exposure function

By adjusting the shutter speed and sensor gain, there will be automatic compensation for the image brightness. As a result, the live image used for alignment and the final picture will have the same color balance.



### Fine Images

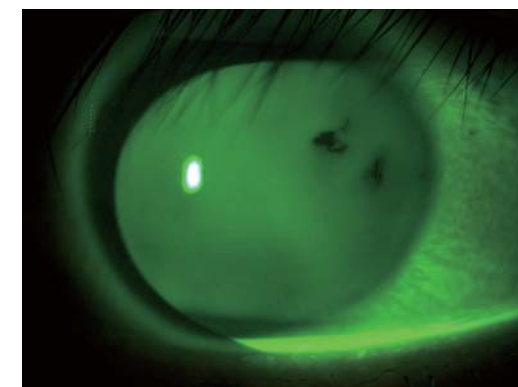
The images captured with DC-4 and displayed on the monitor provide fine images for consultation with patient or patient's family.



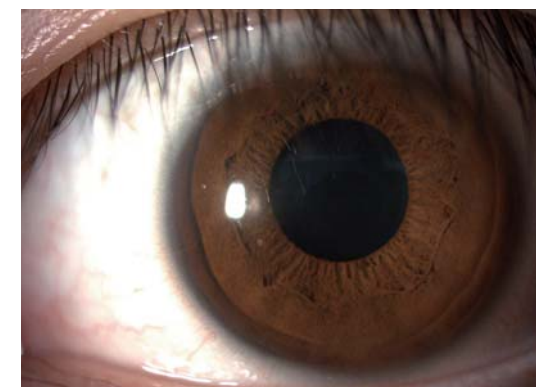
Sclera



Cornea

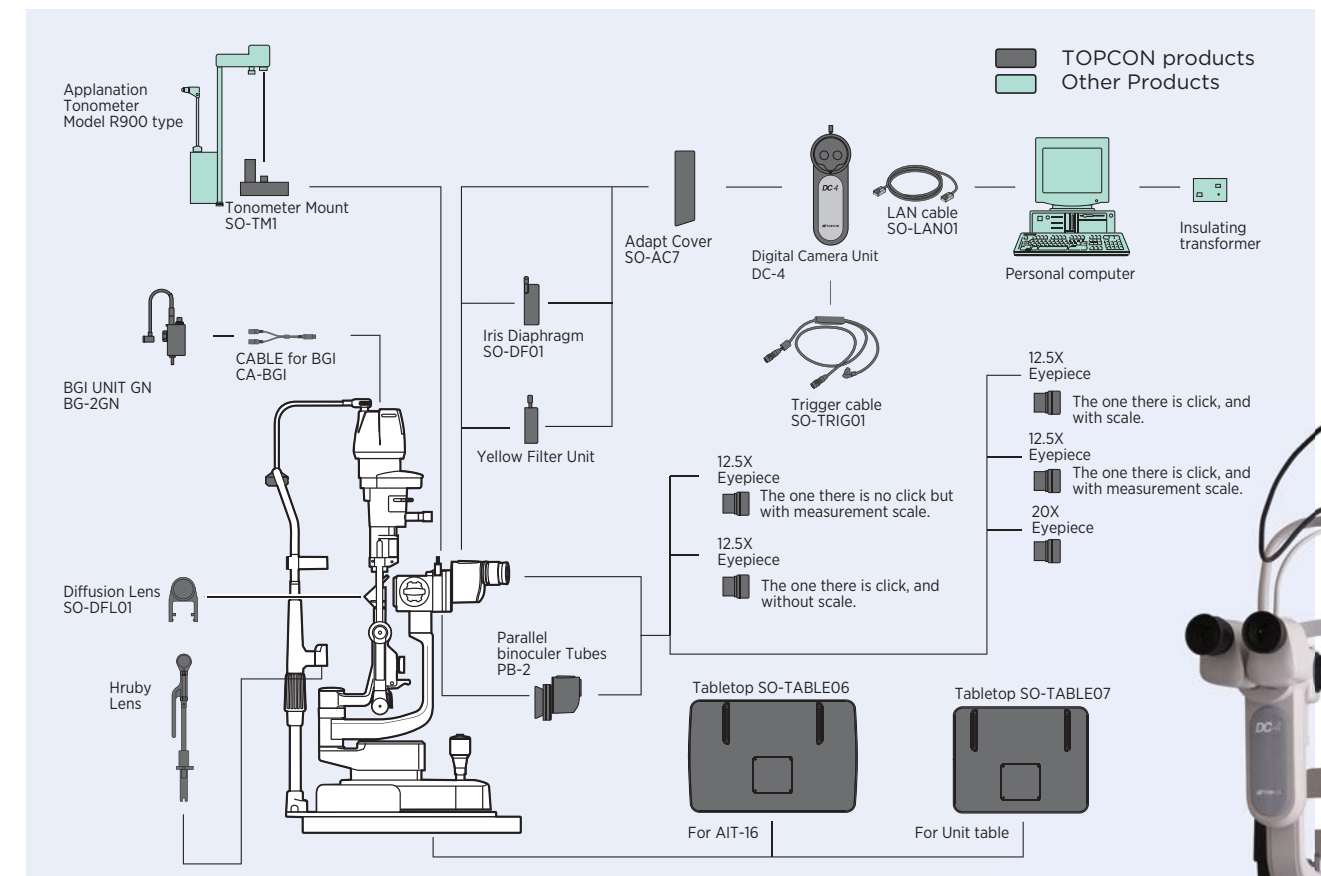


Fluorescence Observation<sup>2</sup>



Iris

### System Chart



<sup>2</sup> Fluorescence observation is possible only in combination with optional yellow filter unit.

<sup>1</sup> DC-4 is optional