



IMAGING MODULES IM 900 & IM 600

From the leader in slit lamp imaging

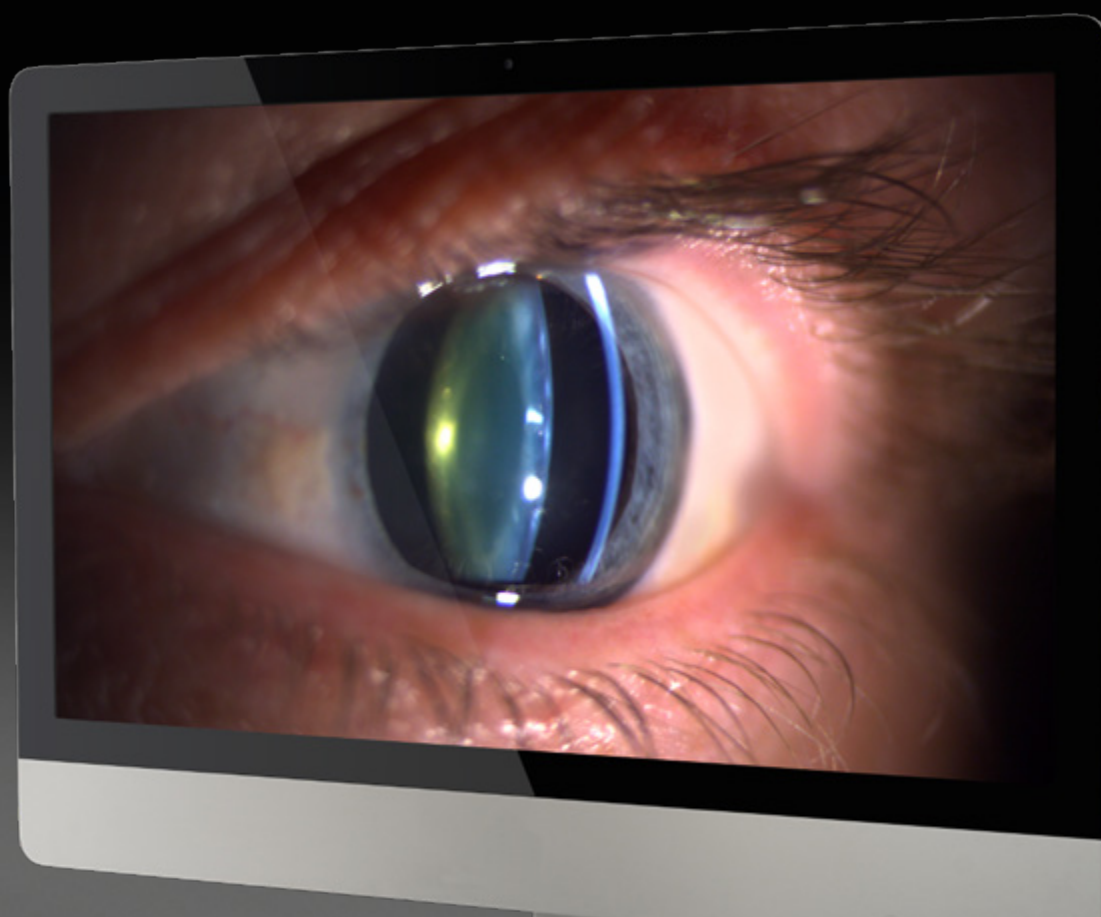
Tradition and Innovation – Since 1858, visionary thinking and a fascination with technology have guided us to develop innovative products of outstanding reliability: Anticipating trends to improve the quality of life.



Outstanding image quality

Equipped with an ultra-sensitive camera, the IM 900 produces images of exceptional quality even under difficult light conditions. Furthermore patient comfort is improved as you can record your findings without excessively dazzling the patient. The wide dynamic range ensures that situations with high contrasts are accurately recorded and the beyond-HD resolution of the sensor ensures crystal clear reproduction of detail on modern monitors.

Like any professional camera, the IM 900 is equipped with Depth of Field Control (DFC), which permits selection of a shallow depth of field when maximum light is required and a deep depth of field when it is important to have different structures of the eye in focus. With DFC, the camera can be ideally adjusted, regardless of the location of the pathology.



Easy-to-use, optimal imaging **More convenient than ever before**

The Imaging Modules IM 900 and IM 600 are more than just cameras. They are fully integrated compact imaging solutions providing you with features which make slit lamp imaging more convenient than ever before.

Ideal workflow – no distraction

The control panel allows you to operate both the camera and the slit lamp illumination. Located in front of the joystick of the slit lamp, it can be used blindly while you are focused on your patient. The release bar is at your finger tip! The compact and modern design conforms to the design of the slit lamp. Thus the Imaging Module comes as a component of the whole system, thereby supporting an ideal examination workflow.

Simple image capturing

Our fast and accurate automatic exposure control ensures correct illumination of the image while you are concentrating on your examination. Thanks to the History Trigger function, you do not need to worry about a patient blinking or moving when you take an image. The History Trigger does not just capture a single image, but records the last few seconds in real time and lets you select the perfect image.

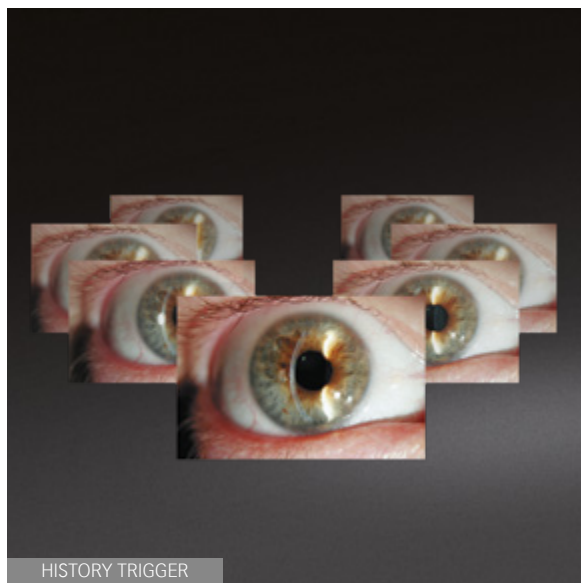
Intuitive software

EyeSuite Imaging is a straightforward imaging software supporting the Haag-Streit imaging solutions. Easy image capture, efficient image editing and a well-structured patient management system make the software a perfect team player for daily practice.

EyeSuite makes your slit lamp networkable both with other Haag-Streit devices and your practice network. It does not require any proprietary third-party software to provide connectivity.



CONTROL PANEL



HISTORY TRIGGER



EYESUITE

HAAG-STREIT IMAGING MODULES

IM 900 and IM 600 **Intuitive imaging – best results**

For many years slit lamp imaging was almost exclusively the domain of the ophthalmic photographer, but since documentation and patient education has become more important, every eye care professional has the need for imaging.

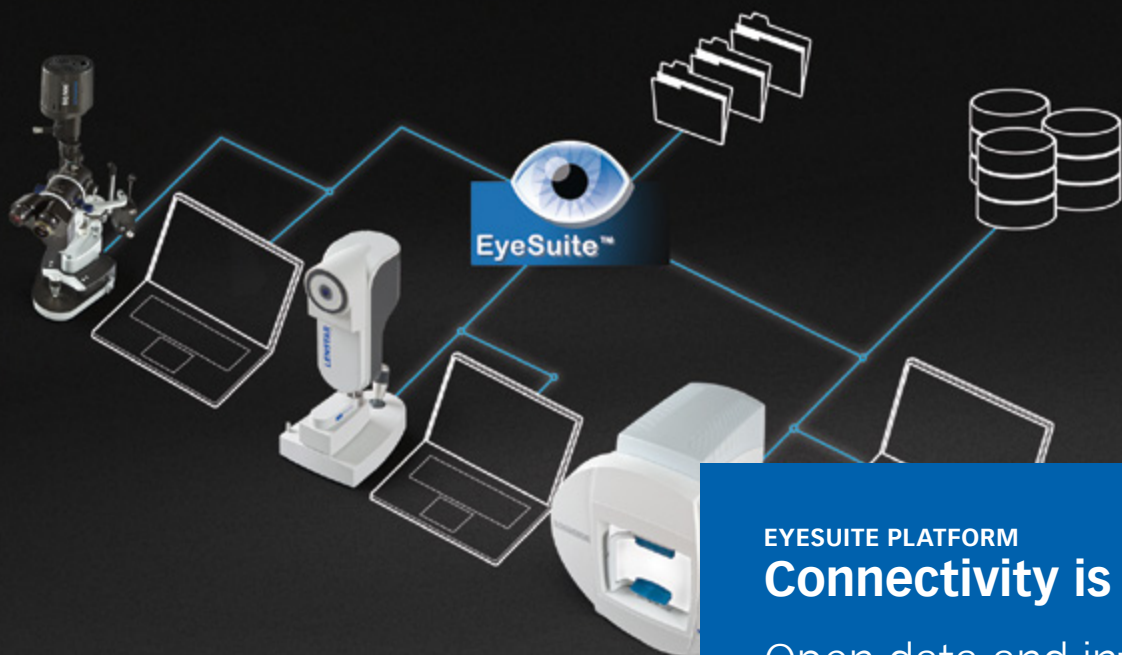
As the leader in slit lamp imaging, Haag-Streit is meeting this need with the introduction of two new imaging systems – the IM 600, a more basic, and the new IM 900, a very sophisticated version. With both solutions Haag-Streit sets new standards in digital slit lamp imaging. Now it is possible for every clinician to produce pictures of very high quality without being distracted from the clinical examination.



Technical specifications

IM 900 and IM 600

	IM 900	IM 600
Compatibility	BQ 900	BP 900 and BQ 900
Beam path	Right side	Right side
Control panel	RM02	RM02
Depth of focus control	Yes	No
Camera interface	USB 3.0	USB 3.0
Shutter system	Global shutter	Rolling shutter
Pixel size	5.86 μm	4.5 μm
Dynamic range (sensor)	73 dB	66 dB
Quantum efficiency at 525 nm	76%	48%
Sensor size	1/1.2"	1/1.8"
Resolution	1920 \times 1200	1600 \times 1200
Frame rate	30 (frames per second)	20 (frames per second)
Software	EyeSuite Imaging	EyeSuite Imaging
EMR interfaces	EyeSuite script language, DICOM (SCU) GDT	EyeSuite script language, DICOM (SCU) GDT



EYESUITE PLATFORM

Connectivity is key.

Open data and intuitive user interfaces for optimal workflow.

HAAG-STREIT AG

Gartenstadtstrasse 10
 3098 Koeniz
 Switzerland
 Phone +41 31 978 01 11
 Fax +41 31 978 02 82
info@haag-streit.com
www.haag-streit.com

Members of HAAG-STREIT Group

HAAG-STREIT Holding AG
www.haag-streit-holding.com

CLEMENT CLARKE Ltd.
www.clement-clarke.com

HAAG-STREIT AG, Diagnostics
www.haag-streit.com

HS DOMS GmbH
www.hs-doms.com

HAAG-STREIT AG, Verkauf Schweiz
www.haag-streit.ch

IPRO GmbH
www.ipro.de

HAAG-STREIT Deutschland GmbH
www.haag-streit.de

John Weiss Ltd.
www.johnweiss.com

HAAG-STREIT Far East
www.haag-streit-fareast.com

Möller-Wedel GmbH & Co KG
www.haag-streit-surgical.com

HAAG-STREIT Medtech AG
www.haag-streit-medtech.com

Möller-Wedel Optical GmbH
www.moeller-wedel-optical.com

HAAG-STREIT Surgical GmbH
www.haag-streit-surgical.com

OptoMedical Technologies GmbH
www.haag-streit-surgical.com

HAAG-STREIT UK
www.haag-streit-uk.com

Reliance Medical Inc.
www.haag-streit-usa.com

HAAG-STREIT USA
www.haag-streit-usa.com

SPECTROS AG
www.spectros.ch